

BERNARDO®

www.bernardo.at

02/2022

MAGNETIC DRILLING MACHINES



MD 3550 E
MD 3550 VD

TPC 1000
MD 3850
MD 4055
MD 5050 E
MD 5050 VD
MD 5075
TPC 2000
MD 6050 VD
MD 9875 VD
MD 1000
TPC 3000

Magnetic core drilling machine

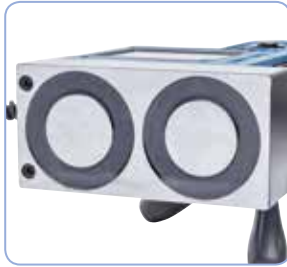
The MD 3550 E magnetic core drilling machine is suitable for core drilling from 12 – 35 mm. Its low weight (11 kg) makes this model very mobile and great for vertical or over head operation.

MD 3550 E

- Stepless, drill head height adjustment, ideal when using long drill bits
- Ideal for steel construction, automobile industry and machine construction
- High magnetic force ensures high safety
- Ergonomically arranged control elements allow practical single hand operation
- Standard safety belt for vertical or over head operation
- Tool holder designed for core drills with 19 mm weldon shaft
- High-quality component ensure long life span
- Solid drill guide ensures optimal results



Clearly arranged control elements.



Powerful electro magnet guarantees best possible magnetic force



Picture shows complete range of standard equipment

Standard accessories:

- Plastic container
- Coolant tank
- Safety belt
- User manual
- Tools

BERNARDO
SEMIPROFESSIONAL



NEW



Technical data

MD 3550 E

Core drill max. Ø	35 mm
Core drill max. drill depth	50 mm
Twist drill max. Ø	13 mm
Travel of drill head max.	170 mm
Idle speed	810 rpm
Arbor weldon shank	19 mm
Distance weldon shank / base max.	145 mm
Magnetic adhesion	16000 N
Dimension magnetic base (L x W x H)	165 x 80 x 50 mm
Motor power	1600 W
Voltage	230 V
Machine dimension (W x D x H)	170 x 280 x 400 mm
Weight approx.	11 kg
Art. no.	01-1379

Magnetic core drilling machine with vario drive

MD 3550 VD

- Variable speed setting allows optimal adjustment of speed when core drilling, countersinking, reaming,.....
- With bubble level as standard for perfect alignment
- Powerful electro magnet guarantees best possible magnetic force
- Standard safety belt for vertical or over head operation
- High-quality component ensure long life span
- Automatic internal lubrication – coolant spreads direct on core drill
- Compared to twist drills, machine requires significantly less feed force when using core drills



Automatic internal lubrication, coolant fluid goes straight to tip of core drill



Exact alignment of the machine on the workpiece thanks to the standard bubble level.



Delivered in high-quality transport box.

Standard accessories:

- Plastic container
- Coolant tank
- Bubble level
- Drill chuck adapter 1/2" – 20 UNF / Weldon shank 19 mm
- Drill chuck 1,5 - 13 mm
- Safety belt
- User manual
- Tools

Vario-drive



BERNARDO
PROFESSIONAL

NEW

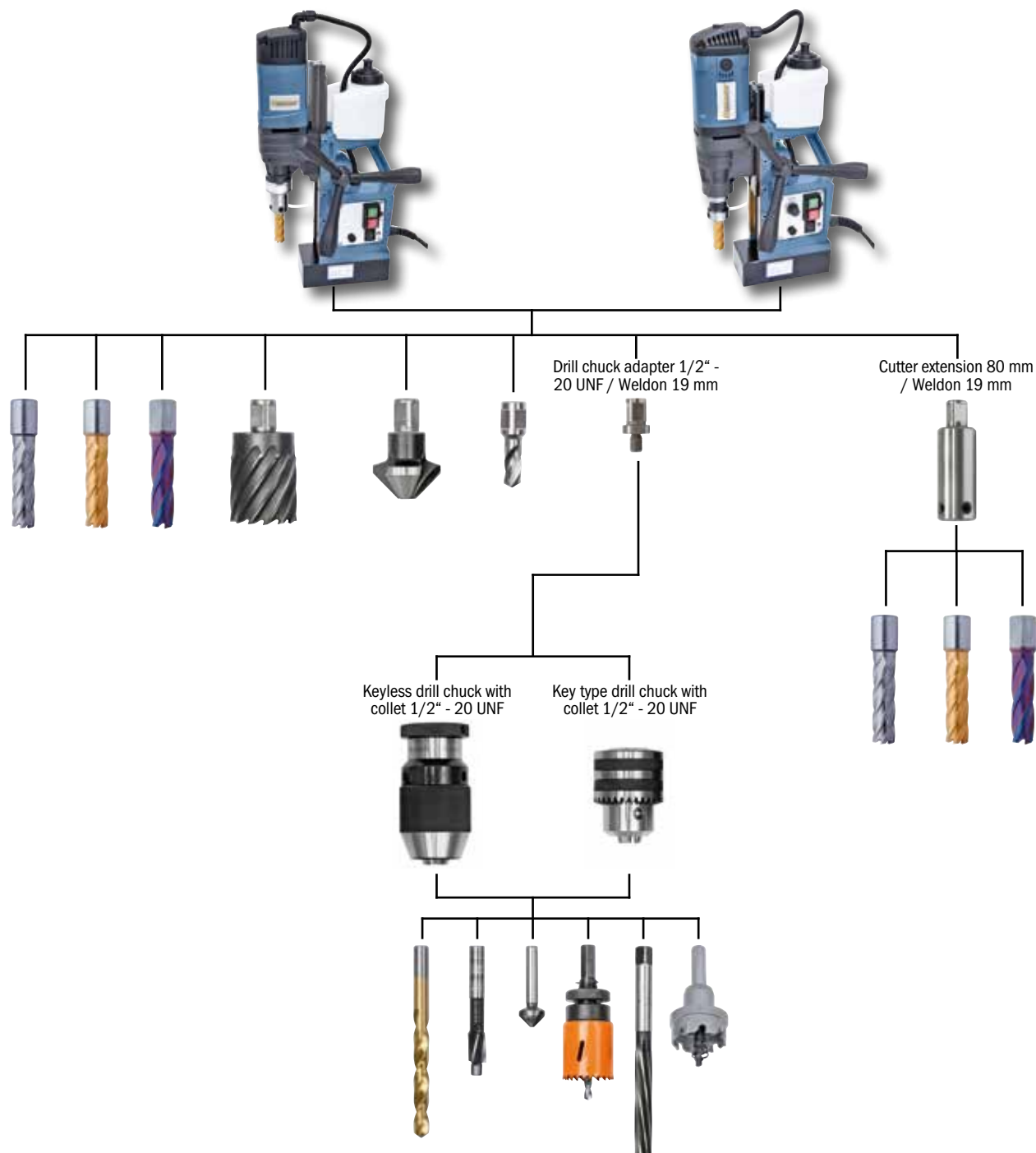
Technical data

MD 3550 VD

Core drill max. Ø	35 mm
Core drill max. drill depth	50 mm
Twist drill max. Ø	13 mm
Travel of drill head max.	155 mm
Idle speed, stepless	100 - 830 rpm
Arbor weldon shank	19 mm
Distance weldon shank / base max.	160 mm
Magnetic adhesion	14800 N
Dimension magnetic base (L x W x H)	165 x 80 x 50 mm
Motor power	1550 W
Voltage	230 V
Machine dimension (W x D x H)	150 x 280 x 430 mm
Weight approx.	11 kg
Art. no.	01-1380

BERNARDO
www.bernardo.at

Accessories for MD 3550 E / MD 3550 VD



Art. no.	Description	excl. VAT	Art. no.	Description	excl. VAT
24-1075	Key type drill chuck 1 - 13 mm / 1/2" - 20 UNF		41-1105	HSS-core drills CDS, TiN-coated, 14/18/22 mm, 5 pcs.*	
24-1075B	Key type drill chuck 3 - 16 mm / 1/2" - 20 UNF		41-11050	HSS-core drills CDL, TiN-coated, 14/18/22 mm, 5 pcs.**	
24-1076	Keyless drill chuck 1 - 13 mm / 1/2" - 20 UNF		41-11041	HSS-core drill-set CDS, TiN-coated, 14 - 24 mm*	
24-1076B	Keyless drill chuck 1 - 16 mm / 1/2" - 20 UNF		41-11042	HSS-core drill-set CDL, TiN-coated, 14 - 24 mm**	
53-1051	Drill chuck adapter 1/2" - 20 UNF / Weldon 19 mm		41-11043	HSSCO5-core drill-set CDS, nACO-coated, 14 - 24 mm***	
53-1054	Cutter extension 80 mm / Weldon 19 mm		41-11044	HSSCO5-core drill-set CDL, nACO-coated, 14 - 24 mm***	

* Drilling depth 25 mm / ** Drilling depth 50 mm / *** Drilling depth 30 mm

Example of use for MD 3550 E / MD 3550 VD



Carbide core drill



HSS-standard core drill



HSS-core drill TiN-coated



HSSCO5-core drill
nACO-coated



Core drilling with cutter extension



Reaming



Twist drill with chuck



Hole saw with drill chuck



Countersink and deburring tools



Carbide hole saw



Countersink



Core drilling

Magnetic core drilling machine with vario drive

TPC 1000

- Automatic internal lubrication – coolant spreads direct on core drill
- Variable speed setting allows optimal adjustment of speed when core drilling, tapping, countersinking or reaming
- Complete with MT 2 taper for mounting of several tools (twist drills, countersinking bits, reamers, tapping chucks, keyhole saws etc.)
- Powerful, high torque drive motor features soft start and overload protection
- Powerful electro magnet guarantees high magnetic force

Vario-drive

Right-left turning

Tapping
max. M 18



2-gear steps, speed alternatively
100 - 270 or 100 - 520 rpm



Robust guideway for increased
stability.



Automatic internal lubrication,
coolant fluid goes straight to tip of
core drill



Tapping chuck set optional
available

BERNARDO[®]
www.bernardo.at
PROFESSIONAL



Technical data

TPC 1000

Core drill max. Ø	36 mm
Core drill max. drill depth	50 mm
Twist drill max. Ø	18 mm
Travel of drill head max.	170 mm
Tapping max.	M 18
Idle speed, stepless	100 - 270 / 100 - 520 rpm
Spindle taper	MT 2
Arbor weldon shank	19 mm
Distance spindle / base max.	180 mm
Distance weldon shank / base max.	80 mm
Magnetic adhesion	14200 N
Dimension magnetic base (L x W x H)	165 x 80 x 50 mm
Motor power	1550 W
Voltage	230 V
Machine dimension (W x D x H)	170 x 280 x 430 mm
Weight approx.	12,5 kg
Art. no.	01-1381

Standard accessories:

- Plastic container
- Coolant tank
- Arbor with automatic internal cooling
MT 2 / Weldon shank 19 mm
- Safety belt
- User manual
- Tools

NEW

Magnetic core drilling machine MD 3850

Compared to standard magnetic core drilling machines, the MD 3850 features smaller dimension, making it the best option when working in limited spaces.

- Compact construction, ideal for working in limited spaces
- With bubble level as standard for perfect alignment
- Spur gear designed for continuous operation
- Ratchet can be mounted on left or right machine side
- Ideal for steel construction, automobile industry and machine construction
- Compact construction allows for easy transport
- High magnetic force ensures high safety
- Ergonomically arranged control elements allow practical single hand operation
- Standard safety chain for vertical or over head operation



Ideal for use in limited spaces



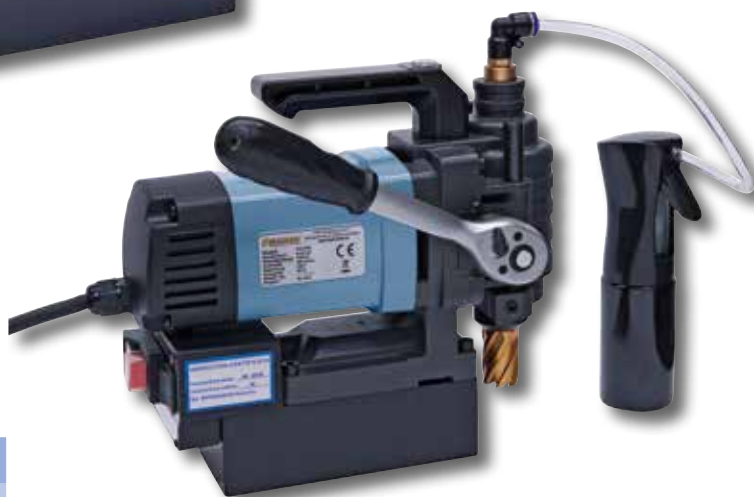
Delivered in high-quality transport box.



Logical arrangement of control elements on back of machine.



NEW



Ratchet allows working in limited spaces.

Optional accessories see page 28 / 29

Technical data	MD 3850
Core drill max. Ø	38 mm
Core drill max. drill depth	50 mm
Idle speed	800 rpm
Arbor weldon shank	19 mm
Throat	30 mm
Stroke	55 mm
Magnetic adhesion	14500 N
Dimension magnetic base (L x W x H)	156 x 80 x 50 mm
Motor power	1650 W
Voltage	230 V
Machine dimension (W x D x H)	150 x 300 x 260 mm
Weight approx.	9,5 kg
Art. no.	01-1369

Standard accessories:

- Safety belt
- Plastic container
- Bubble level
- Carry handle
- Reversible ratchet
- Lubricating pump
- User manual
- Tools

Great mobility



Magnetic core drilling machine MD 4055

The MD 4055 magnetic core drilling machine is suitable for core drilling from 12 – 40 mm. Its low weight (12.7 kg) makes this model very mobile and great for vertical or over head operation.

- Stepless, drill head height adjustment, ideal when using long drill bits
- Automatic internal lubrication – coolant spreads direct on core drill
- Tool holder designed for core drills with 19 mm weldon shaft
- Round rod guiding ensures accurate drill head travel
- High-quality component ensure long life span
- Solid drill guide ensures optimal results
- Powerful motor, designed for continuous operation
- Professional machine, ideal for transport



Patented guiding system for increased stability.



Clearly arranged control elements.



Picture shows complete range of standard equipment

Standard accessories:

- Safety chain
- Plastic container
- Coolant tank
- User manual
- Tools

BERNARDO
www.bernardo.at
PROFESSIONAL

Technical data	MD 4055
Core drill max. Ø	40 mm
Core drill max. drill depth	50 mm
Twist drill max. Ø	13 mm
Travel of drill head max.	135 mm
Idle speed	480 rpm
Arbor weldon shank	19 mm
Distance weldon shank / base max.	140 mm
Magnetic adhesion	10500 N
Dimension magnetic base (L x W x H)	159 x 79 x 48 mm
Motor power	1150 W
Voltage	230 V
Machine dimension (W x D x H)	240 x 255 x 500 mm
Weight approx.	12,7 kg
Art. no.	01-1370



**Best
Price**

Great mobility

Magnetic core drilling machine

The model MD 5050 E is a versatile magnetic core drilling machine for core drilling in the range 12 - 50 mm. The characteristics of this machine are the low weight, the powerful drive motor and the optimal price-performance ratio.

MD 5050 E

- Stepless, drill head height adjustment, ideal when using long drill bits
- Ideal for steel construction, automobile industry and machine construction
- High magnetic force ensures high safety
- Ergonomically arranged control elements allow practical single hand operation
- Standard safety belt for vertical or over head operation
- Tool holder designed for core drills with 19 mm weldon shaft
- High-quality component ensure long life span
- Solid drill guide ensures optimal results



Automatic internal lubrication, coolant fluid goes straight to tip of core drill



Robust guideway for increased stability.



Logical arrangement of control elements .



Powerful electro magnet guarantees best possible magnetic force

BERNARDO
SEMIPROFESSIONAL



NEW



Standard accessories:

- Plastic container
- Coolant tank
- Safety belt
- User manual
- Tools

Technical data	MD 5050 E
Core drill max. Ø	50 mm
Core drill max. drill depth	50 mm
Twist drill max. Ø	13 mm
Travel of drill head max.	170 mm
Idle speed	790 rpm
Arbor weldon shank	19 mm
Distance weldon shank / base max.	145 mm
Magnetic adhesion	16200 N
Dimension magnetic base (L x W x H)	165 x 80 x 50 mm
Motor power	1650 W
Voltage	230 V
Machine dimension (W x D x H)	170 x 280 x 400 mm
Weight approx.	11,5 kg
Art. no.	01-1382

BERNARDO
www.bernardo.at

For technical requests you can reach us by e-mail at service@pwa.at

Magnetic core drilling machine with vario drive

MD 5050 VD

- Variable speed setting allows optimal adjustment of speed when core drilling, countersinking, reaming,.....
- Powerful electro magnet guarantees best possible magnetic force
- Standard safety belt for vertical or over head operation
- High-quality component ensure long life span
- Automatic internal lubrication – coolant spreads direct on core drill
- Compared to twist drills, machine requires significantly less feed force when using core drills
- Tool holder designed for core drills with 19 mm weldon shaft



Automatic internal lubrication, coolant fluid goes straight to tip of core drill



Exact adjustment of the cutting speed using a potentiometer.



Delivered in high-quality transport box.

Vario-drive



BERNARDO[®]
www.bernardo.at
PROFESSIONAL

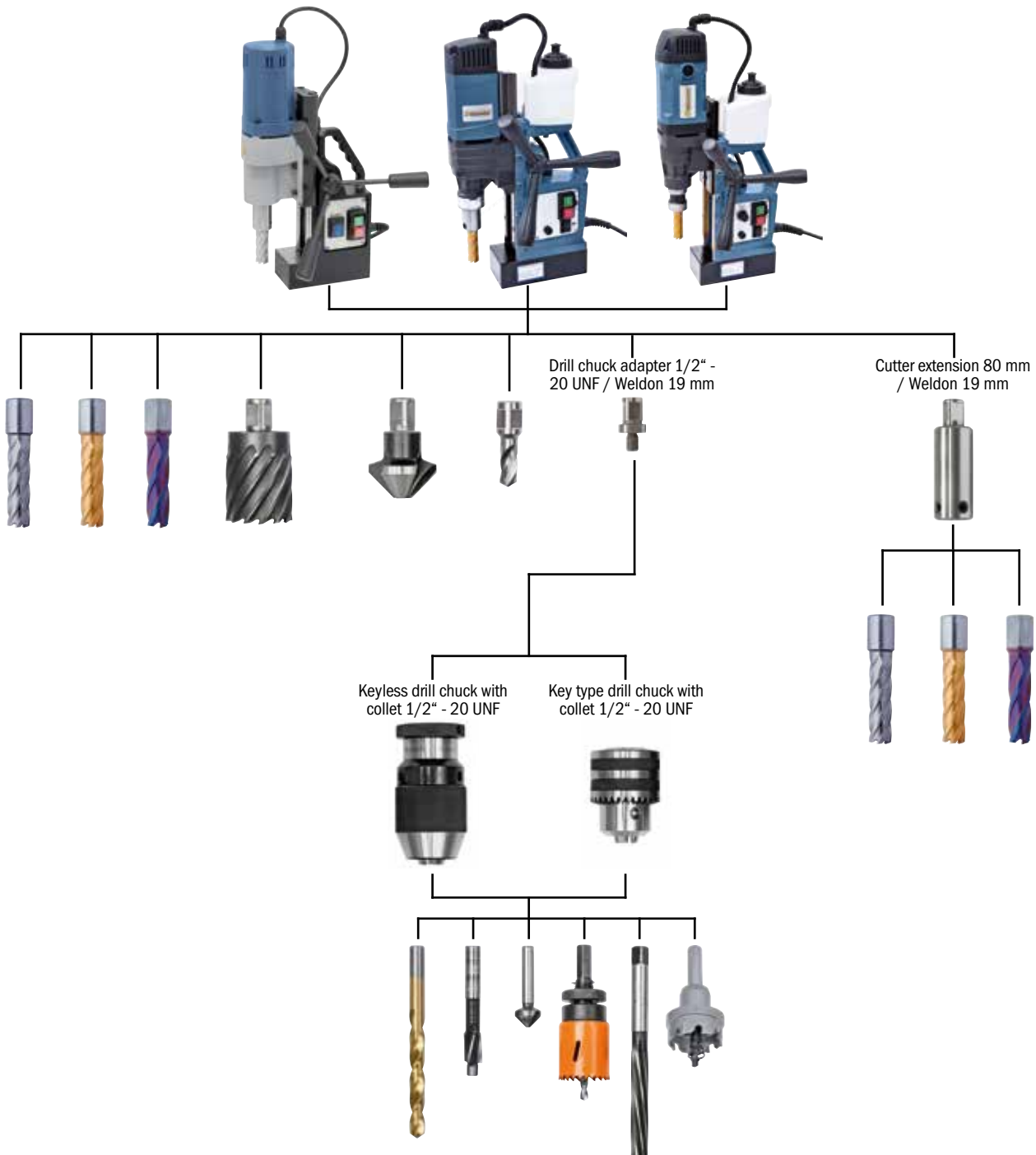
NEW

Standard accessories:

- Plastic container
- Coolant tank
- Drill chuck adapter 1/2" – 20 UNF / Weldon shank 19 mm
- Drill chuck 1,5 - 13 mm
- Safety belt
- User manual
- Tools

Technical data	MD 5050 VD
Core drill max. Ø	50 mm
Core drill max. drill depth	50 mm
Twist drill max. Ø	13 mm
Travel of drill head max.	155 mm
Idle speed, stepless	100 - 810 rpm
Arbor weldon shank	19 mm
Distance weldon shank / base max.	170 mm
Magnetic adhesion	15600 N
Dimension magnetic base (L x W x H)	165 x 80 x 50 mm
Motor power	1700 W
Voltage	230 V
Machine dimension (W x D x H)	150 x 280 x 430 mm
Weight approx.	11,2 kg
Art. no.	01-1383

Accessories for MD 4055 / MD 5050 E / MD 5050 VD



Art. no.	Description	excl. VAT	Art. no.	Description	excl. VAT
24-1075	Key type drill chuck 1 - 13 mm / 1/2" - 20 UNF		41-1105	HSS-core drills CDS, TiN-coated, 14/18/22 mm, 5 pcs.*	
24-1075B	Key type drill chuck 3 - 16 mm / 1/2" - 20 UNF		41-11050	HSS-core drills CDL, TiN-coated, 14/18/22 mm, 5 pcs.**	
24-1076	Keyless drill chuck 1 - 13 mm / 1/2" - 20 UNF		41-11041	HSS-core drill-set CDS, TiN-coated, 14 - 24 mm*	
24-1076B	Keyless drill chuck 1 - 16 mm / 1/2" - 20 UNF		41-11042	HSS-core drill-set CDL, TiN-coated, 14 - 24 mm**	
53-1051	Drill chuck adapter 1/2" - 20 UNF / Weldon 19 mm		41-11043	HSSCO5-core drill-set CDS, nACO-coated, 14 - 24 mm***	
53-1054	Cutter extension 80 mm / Weldon 19 mm		41-11044	HSSCO5-core drill-set CDL, nACO-coated, 14 - 24 mm***	

* Drilling depth 25 mm / ** Drilling depth 50 mm / *** Drilling depth 30 mm

Magnetic core drilling machine MD 5075

The MD 5075 mechanic 2-step gear magnetic core drilling machine ensure high torque for drilling diameters up to 50 mm. Due to the large number of optional accessories this machine is very versatile useable.

- Stepless height adjustment of drill head – ideal when processing long drill bits
- Compared to twist drills, machine requires significantly less feed force when using core drills
- Powerful electro magnet guarantees best possible magnetic force
- Including arbor with coolant feed MT 2 / Weldon 19 mm
- 2-step gear allows ideal speed adjustment to each workpiece
- Serially with safety chain for vertical or over head operation
- Powerful, high-torque motor constructed for continuous operation
- Ideal for steel construction, automobile industry and machine construction

BERNARDO[®]
www.bernardo.at
PROFESSIONAL

2 speeds



2-gear steps, speed alternatively 230 / 550 rpm



Automatic internal lubrication, coolant fluid goes straight to tip of core drill



Patented guiding system for increased stability.

Standard accessories:

- Safety chain
- Plastic container
- Coolant tank
- Arbor with automatic internal cooling MT 2 / Weldon shank 19 mm
- User manual
- Tools

Technical data	MD 5075
Core drill max. Ø	50 mm
Core drill max. drill depth	75 mm
Twist drill max. Ø	16 mm
Travel of drill head max.	195 mm
Idle speed	230 / 550 rpm
Spindle taper	MT 2
Arbor weldon shank	19 mm
Distance spindle / base max.	250 mm
Distance weldon shank / base max.	140 mm
Magnetic adhesion	12800 N
Dimension magnetic base (L x W x H)	178 x 94 x 44 mm
Motor power	1550 W
Voltage	230 V
Machine dimension (W x D x H)	270 x 300 x 625 mm
Weight approx.	18 kg
Art. no.	01-1372



Spindle taper
MT 2

Patented guiding
system

Magnetic core drilling machine with vario drive

TPC 2000

- Automatic internal lubrication, coolant fluid goes straight to tip of core drill
- Variable speed setting allows optimal adjustment of speed when core drilling, tapping, countersinking or reaming
- Complete with MT 2 taper for mounting of several tools (twist drills, countersinking bits, reamers, tapping chucks, keyhole saws etc.)
- Powerful, high torque drive motor features soft start and overload protection
- Powerful electro magnet guarantees high magnetic force



Clearly arranged control elements.



Automatic internal lubrication, coolant fluid goes straight to tip of core drill



Delivered in high-quality transport box.



Tapping chuck set optional available



Tapping
max. M 20

Right-left turning

Vario-drive

Patented guiding system

BERNARDO
PROFESSIONAL

Technical data

TPC 2000

Core drill max. Ø	50 mm
Core drill max. drill depth	75 mm
Twist drill max. Ø	16 mm
Travel of drill head max.	195 mm
Tapping max.	M 20
Idle speed, stepless	112 - 230 / 270 - 550 rpm
Spindle taper	MT 2
Arbor weldon shank	19 mm
Distance spindle / base max.	250 mm
Distance weldon shank / base max.	155 mm
Magnetic adhesion	12800 N
Dimension magnetic base (L x W x H)	178 x 94 x 44 mm
Motor power	1550 W
Voltage	230 V
Machine dimension (W x D x H)	280 x 300 x 625 mm
Weight approx.	18,28 kg
Art. no.	01-1375

Standard accessories:

- Safety chain
- Plastic container
- Coolant tank
- Arbor with automatic internal cooling MT 2 / Weldon shank 19 mm
- User manual
- Tools

BERNARDO
www.bernardo.at

Magnetic core drilling machine with vario drive

MD 6050 VD

- Variable speed setting allows optimal adjustment of speed when core drilling, tapping, countersinking or reaming
- With bubble level as standard for perfect alignment
- Complete with MT 2 taper for mounting of several tools (twist drills, countersinking bits, reamers, tapping chucks, keyhole saws etc.)
- Automatic internal lubrication – coolant spreads direct on core drill
- Powerful electro magnet guarantees high magnetic force
- Ideal for steel construction, automobile industry and machine construction



Exact adjustment of the cutting speed using a potentiometer.



Exact alignment of the machine on the workpiece thanks to the standard bubble level.



Complete with MT 2 taper for clamping of various tools.

BERNARDO
PROFESSIONAL

NEW

Spindle taper
MT 2

Vario-drive



Technical data

MD 6050 VD

Core drill max. Ø	60 mm
Core drill max. drill depth	50 mm
Twist drill max. Ø	23 mm
Travel of drill head max.	180 mm
Idle speed, stepless	100 - 440 rpm
Spindle taper	MT 2
Arbor weldon shank	19 mm
Distance spindle / base max.	220 mm
Distance weldon shank / base max.	125 mm
Magnetic adhesion	16000 N
Dimension magnetic base (L x W x H)	202 x 105 x 45 mm
Motor power	1890 W
Voltage	230 V
Machine dimension (W x D x H)	200 x 320 x 500 mm
Weight approx.	17 kg
Art. no.	01-1384

Standard accessories:

- Plastic container
- Coolant tank
- Bubble level
- Arbor with automatic internal cooling MT 2 / Weldon shank 19 mm
- Safety belt
- User manual
- Tools

Example of use TPC 1000 / MD 5075 / TPC 2000 / MD 65050 VD



Thread cutting



Core drilling with quick release tool holder



Drilling with MT 2 drill



Reaming



Countersink and deburring tools



Carbide core drill



HSS-core drill TiN-coated



HSSCO5-core drill nACO-coated



Core drilling with cutter extension



Hole saw with drill chuck

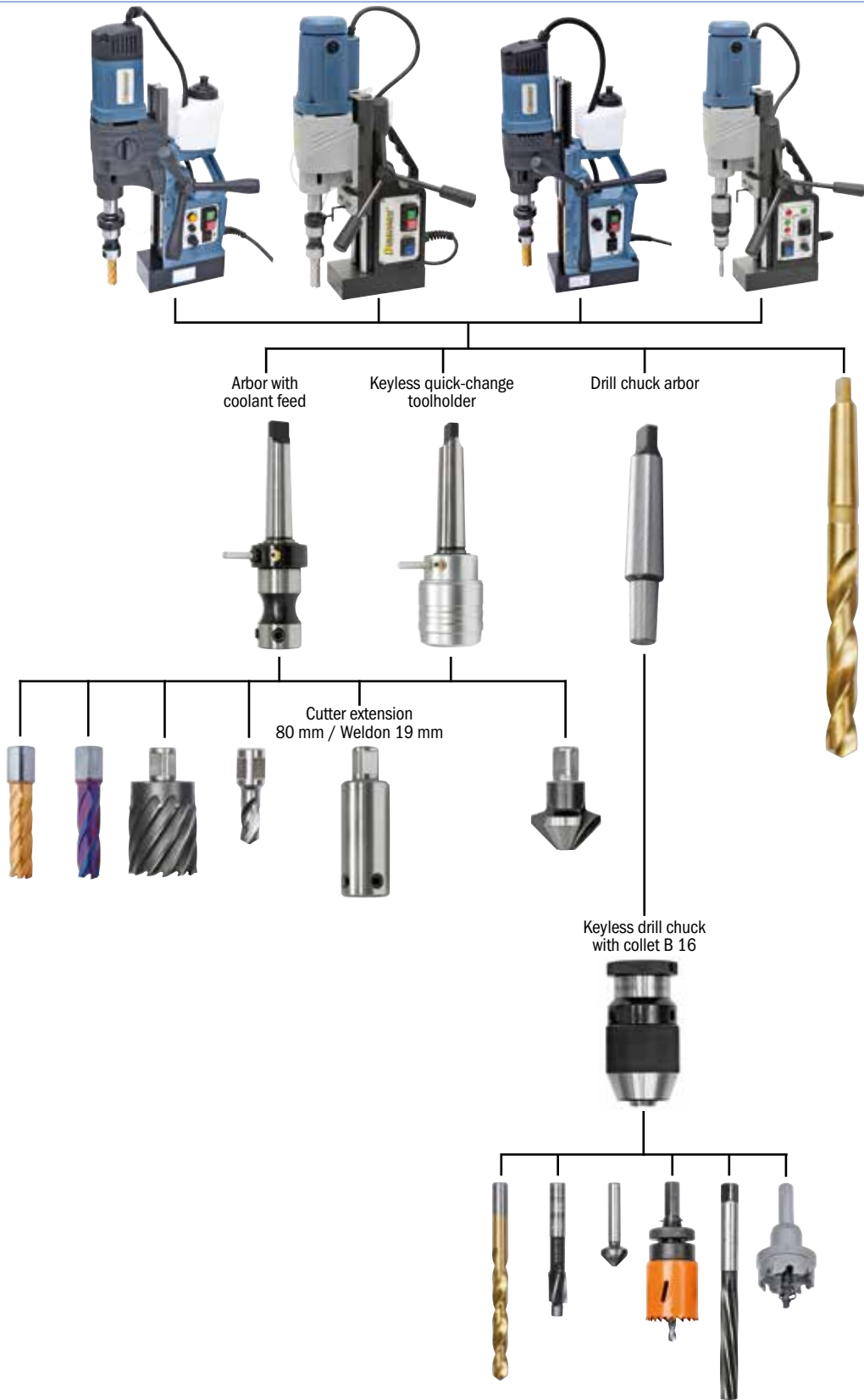


Twist drill with chuck

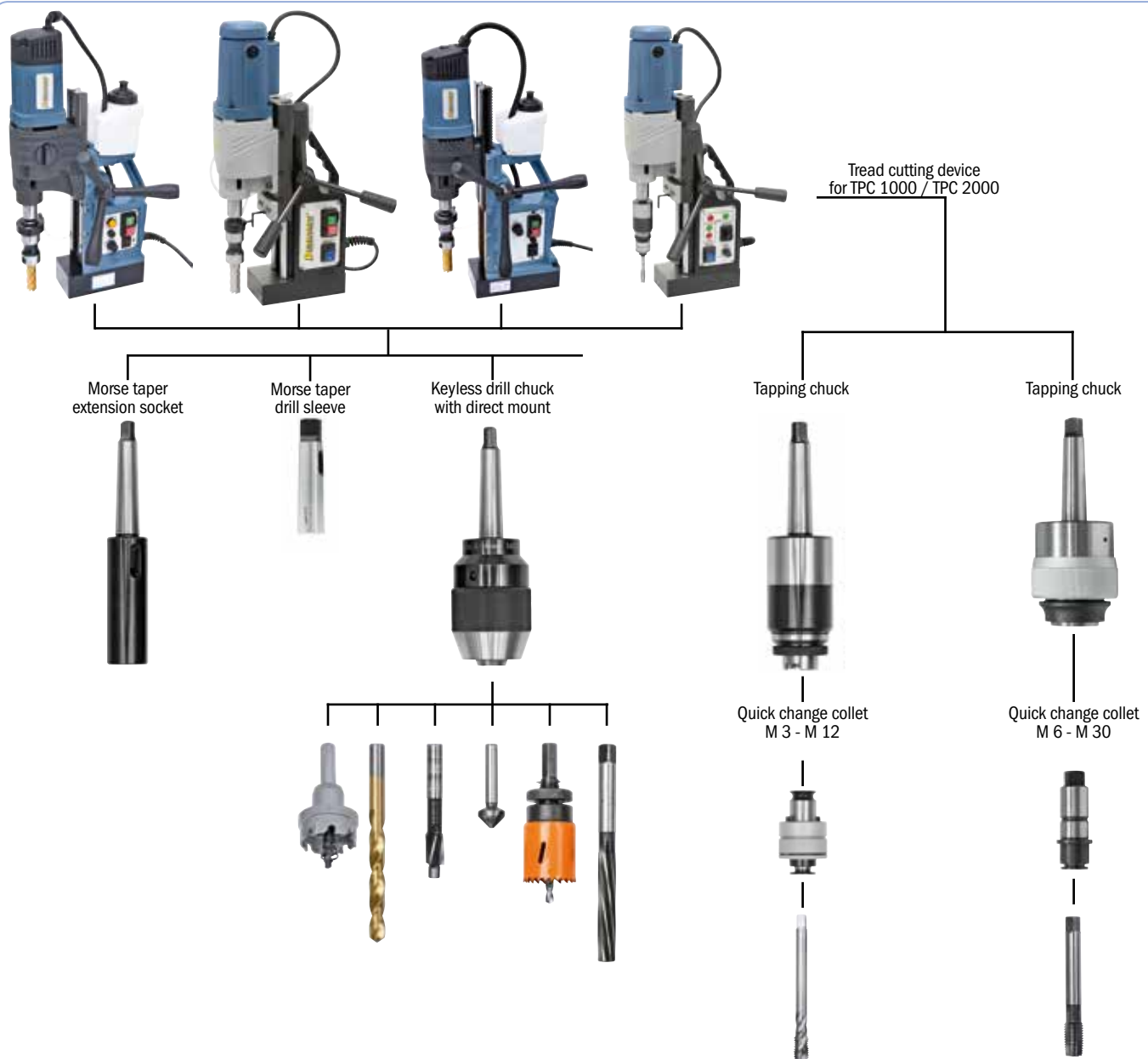


Countersink

Accessories TPC 1000/TPC 2000/MD 5075/MD 6050 VD



Accessories TPC 1000/TPC 2000/MD 5075/MD 6050 VD



Art. no.	Description	excl. VAT	Art. no.	Description	excl. VAT
24-1002	Morse taper drill chuck arbor MT 2 - B 16		24-1098	Quick change tapping chuck set MT2 / M6-M30 / 12 pcs.	
24-1020	Morse taper drill sleeve MT 2 / 1		41-1105	HSS-core drills CDS, TiN-coated, 14/18/22 mm, 5 pcs.*	
24-1041	Morse taper extension socket MT 2 / 2		41-11050	HSS-core drills CDL, TiN-coated, 14/18/22 mm, 5 pcs.**	
24-1042	Morse taper extension socket MT 2 / 3		41-11041	HSS-core drill-set CDS, TiN-coated, 14 - 24 mm*	
24-1070	Keyless drill chuck with direct mount MT 2, 1 - 13 mm		41-11042	HSS-core drill-set CDL, TiN-coated, 14 - 24 mm**	
24-1071	Keyless drill chuck with direct mount MT 2, 1 - 16 mm		53-1054	Cutter extension 80 mm / Weldon 19 mm	
24-1081	Keyless drill chuck 1 - 13 mm / B 16		53-1089	Arbor with coolant feed MT 2 / Weldon 19 mm	
24-1082	Keyless drill chuck 1 - 16 mm / B 16		53-1096	Keyless quick-change toolholder with autom. coolant feed MT 2	
24-1089	Double roller tapping chuck set MT 2, M 3 - M 12 / 8-pcs.		54-1206	Universal coolant fluid MN 1103, 5 l canister	

* Drilling depth 25 mm / ** Drilling depth 50 mm

Magnetic core drilling machine with vario drive

MD 9875 VD

- Variable speed setting allows optimal adjustment of speed when core drilling, tapping, countersinking or reaming
- With bubble level as standard for perfect alignment
- Complete with MT 3 taper for mounting of several tools (twist drills, countersinking bits, reamers, tapping chucks, keyhole saws etc.)
- Automatic internal lubrication – coolant spreads direct on core drill
- Powerful electro magnet guarantees high magnetic force
- Ideal for steel construction, automobile industry and machine construction



Exact adjustment of the cutting speed using a potentiometer.



Exact alignment of the machine on the workpiece thanks to the standard bubble level.



Complete with MT 3 taper for clamping of various tools.

NEW

Spindle taper
MT 3

Vario-drive

BERNARDO[®]
www.bernardo.at
PROFESSIONAL

Technical data

MD 9875 VD

Core drill max. Ø	98 mm
Core drill max. drill depth	75 mm
Twist drill max. Ø	28 mm
Travel of drill head max.	180 mm
Idle speed, stepless	100 - 340 rpm
Spindle taper	MT 3
Arbor weldon shank	19 mm
Distance spindle / base max.	210 mm
Distance weldon shank / base max.	110 mm
Magnetic adhesion	17000 N
Dimension magnetic base (L x W x H)	202 x 105 x 45 mm
Motor power	2180 W
Voltage	230 V
Machine dimension (W x D x H)	250 x 320 x 500 mm
Weight approx.	17,5 kg
Art. no.	01-1385



Standard accessories:

- Plastic container
- Coolant tank
- Bubble level
- Arbor with automatic internal cooling MT 3 / Weldon shank 19 mm
- Safety belt
- User manual
- Tools

Magnetic core drilling machine MD 1000

The MD 1000 mechanic 4-step gear magnetic core drilling machine ensure high torque for drilling diameters up to 100 mm. Due to the large number of optional accessories this machine is very versatile useable.



- Automatic internal lubrication, coolant fluid goes straight to tip of core drill
- Standard 4-step gear unit allows high torque at low speed
- Powerful, high-torque motor – designed for continuous operation
- Professional machine for heavy work loads
- Extensive range of extras increase application area
- MT 3 taper shank allows clamping of several tools
- 4-step gear unit allows optimal cutting speed adjustment when core drilling, countersinking or reaming



Patented guiding system for increased stability.



Complete with MT 3 taper for clamping of various tools.



Picture shows complete range of standard equipment, easy transport due to integrated rolls in the transport box.



Wide range of optional accessories

4 speeds

Technical data	MD 1000
Core drill max. Ø	100 mm
Core drill max. drill depth	75 mm
Twist drill max. Ø	32 mm
Travel of drill head max.	250 mm
Idle speed	85 / 160 / 320 / 570 rpm
Spindle taper	MT 3
Arbor weldon shank	19 mm
Distance spindle / base max.	320 mm
Distance weldon shank / base max.	140 mm
Magnetic adhesion	25200 N
Dimension magnetic base (L x W x H)	210 x 105 x 70 mm
Motor power	2000 W
Voltage	230 V
Machine dimension (W x D x H)	270 x 380 x 785 mm
Weight approx.	28,84 kg
Art. no.	01-1378

Standard accessories:

- Safety chain
- Plastic container
- Coolant tank
- Arbor with automatic internal cooling
- MT 3 / Weldon shank 19 mm
- User manual
- Tools

Magnetic core drilling machine with vario drive

TPC 3000

- Automatic internal lubrication, coolant fluid goes straight to tip of core drill
- Complete with MT 3 taper for mounting of several tools (twist drills, countersinking bits, reamers, tapping chucks, keyhole saws etc.)
- Powerful, high torque drive motor features soft start and overload protection
- Variable speed setting allows optimal adjustment of speed when core drilling, tapping, countersinking or reaming
- Tool holders are designed for core drills feat. Weldon shaft 19 (standard) or 32 mm (optional)
- Powerful electro magnet guarantees high magnetic force

Speed steps

1. 30 - 60 rpm
2. 60 - 105 rpm
3. 105 - 210 rpm
4. 210 - 380 rpm

Wide range of optional accessories

Tapping max. M 20

Right-left turning



Comes complete gear box featuring 4 gear settings - speed variable adjustable in each setting .



Powerful drive motor, designed for continuous operation.



Optional available: Quick change tapping chuck set with inserts from M6 - M30



Automatic internal lubrication, coolant fluid goes straight to tip of core drill



Standard accessories:

- Safety chain
- Plastic container
- Coolant tank
- Arbor with automatic internal cooling
- MT 3 / Weldon shank 19 mm
- User manual
- Tools

Technical data

TPC 3000

Core drill max. Ø	100 mm
Core drill max. drill depth	75 mm
Twist drill max. Ø	32 mm
Travel of drill head max.	250 mm
Tapping max.	M 30
Idle speed, stepless	30 - 60 / 60 - 105
	105 - 210 / 210 - 380 rpm
Spindle taper	MT 3
Arbor weldon shank	19 mm
Distance spindle / base max.	320 mm
Distance weldon shank / base max.	225 mm
Magnetic adhesion	25200 N
Dimension magnetic base (L x W x H)	210 x 105 x 70 mm
Motor power	2000 W
Voltage	230 V
Machine dimension (W x D x H)	280 x 350 x 785 mm
Weight approx.	29 kg
Art. no.	01-1376

BERNARDO
PROFESSIONAL

Example of use MD 9875 VD / MD 1000 / TPC 3000



Thread cutting



Core drilling with quick release tool holder



Drilling with MT 3 drill



Reaming



Countersink and deburring tools



Carbide core drill



HSS-core drill TiN-coated



HSSCO5-core drill nACO-coated



Core drilling with cutter extension



Carbide hole saw

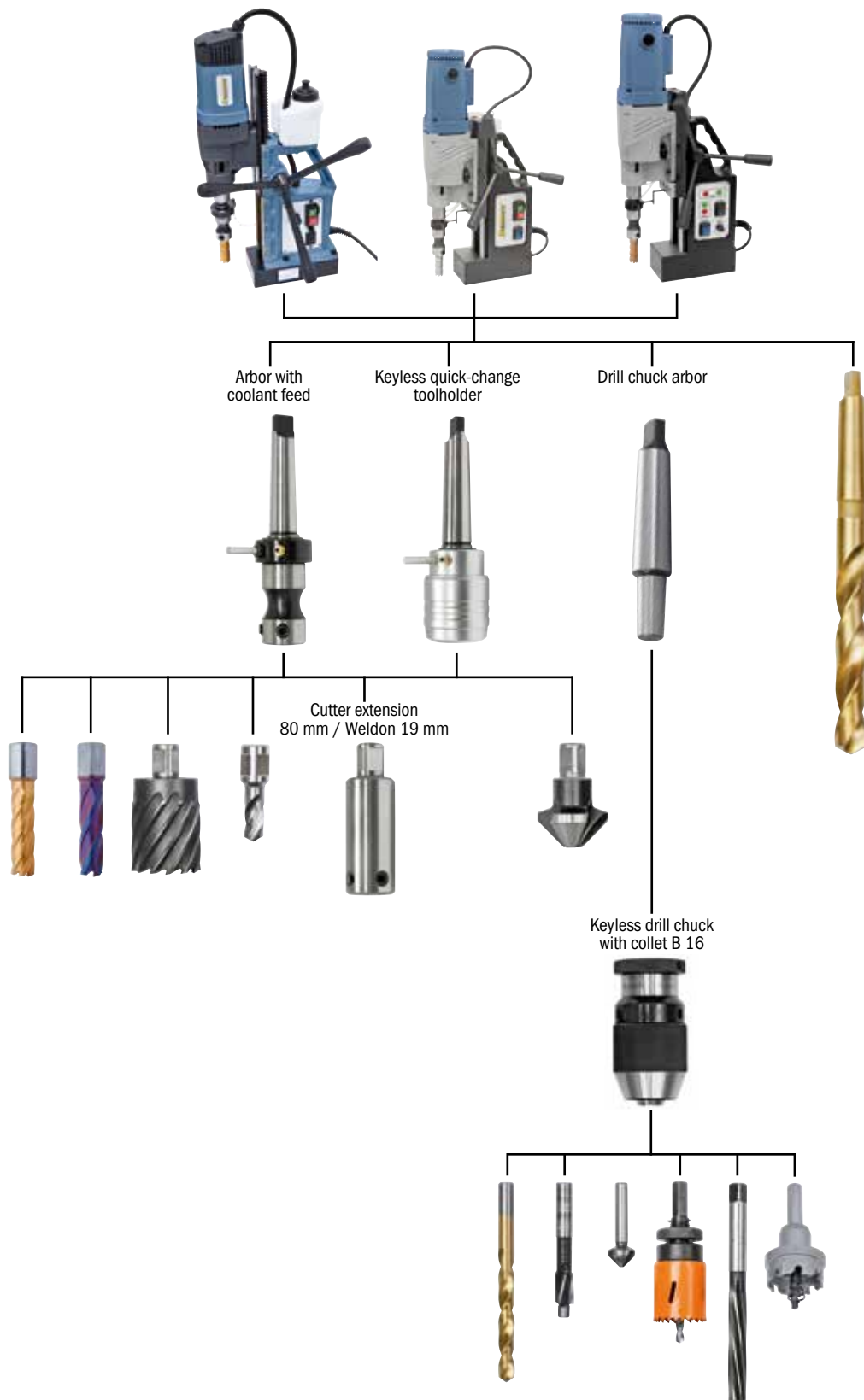


Twist drill with chuck

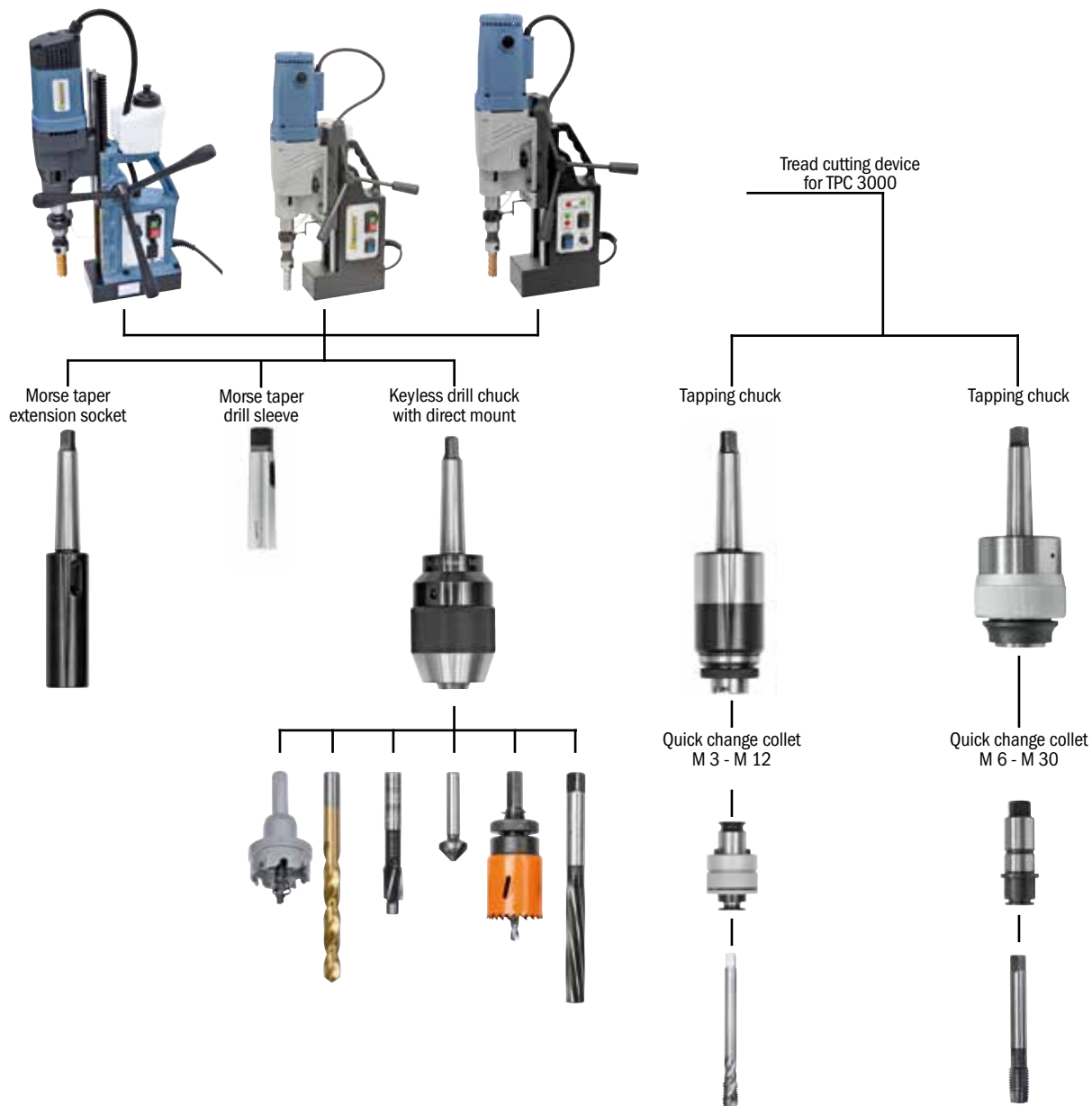


Countersink

Accessories for MD 9875 VD / MD 1000 / TPC 3000



Accessories for MD 9875 VD / MD 1000 / TPC 3000



Art. no.	Description	excl. VAT	Art. no.	Description	excl. VAT
24-1005	Morse taper drill chuck arbor MT 3 - B 16		24-1099	Quick change tapping chuck set MT3 / M6-M30 / 12 pcs.	
24-1022	Morse taper drill sleeve MT 3 / 2		41-11050	HSS-core drills CDL, TiN-coated, 14/18/22 mm, 5 pcs.*	
24-1043	Morse taper extension socket MT 3 / 2		41-11042	HSS-core drill-set CDL, TiN-coated, 14 - 24 mm*	
24-1044	Morse taper extension socket MT 3 / 3		53-1054	Cutter extension 80 mm / Weldon 19 mm	
24-1072	Keyless drill chuck with direct mount MT 3, 1 - 16 mm		53-1090	Arbor with coolant feed MT 3 / Weldon 19 mm	
24-1081	Keyless drill chuck 1 - 13 mm / B 16		53-1091	Arbor with coolant feed MT 3 / Weldon 32 mm	
24-1082	Keyless drill chuck 1 - 16 mm / B 16		53-1097	Keyless quick-change toolholder with autom. coolant feed MT 3	
24-1090	Double roller tapping chuck set MT 3, M 3 - M 12 / 8-pcs.		54-1206	Universal coolant fluid MN 1103, 5 l canister	
24-1092	Double roller tapping chuck set MT 3, M 12 - M 24 / 8-pcs.		54-1208	High-performance cutting oil BDS 5000 / 1 ltr.	

* Drilling depth 50 mm

Accessories core drilling machines

Arbor with coolant feed



- With automatic internal cooling for core drills
- For drilling machines with MT-taper
- For mounting of tools with weldon shaft 19 und 32 mm

Art.no.	Description	excl. VAT
53-1089	Arbor with coolant feed MT 2 / Weldon 19 mm	
53-1090	Arbor with coolant feed MT 3 / Weldon 19 mm	
53-1091	Arbor with coolant feed MT 3 / Weldon 32 mm	
53-1092	Arbor with coolant feed MT 4 / Weldon 32 mm	
53-1093	Arbor with coolant feed MT 5 / Weldon 32 mm	



Keyless quick-change tool holder with autom. coolant feed



- With automatic internal cooling for core drills with weldon shaft 19 mm
- Quick tool changing without wrench
- Including tube and quick-lock coupling

Art.no.	Description	excl. VAT
53-1096	Keyless quick-change toolholder with autom. coolant feed MT 2	
53-1097	Keyless quick-change toolholder with autom. coolant feed MT 3	



Drill chuck adapter



- Adapter from Weldon 19 mm to 1/2" - 20 UNF
- For mounting of key type and keyless drill chucks

Art.no.	Description	excl. VAT
53-1051	Drill chuck adapter 1/2" - 20 UNF / Weldon 19 mm	



Cutter extension



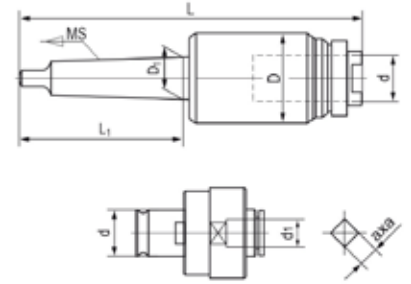
- Weldon shaft extension 80 mm
- For mounting of tools with weldon shaft 19 mm
- Application at deep or stepeed workpiece surfaces
- Including knock-out pin

Art.no.	Description	excl. VAT
53-1054	Cutter extension 80 mm / Weldon 19 mm	



Accessories core drilling machines

Quick change drilling and tapping chuck set M 3 - M 12 / M 12 - M 24



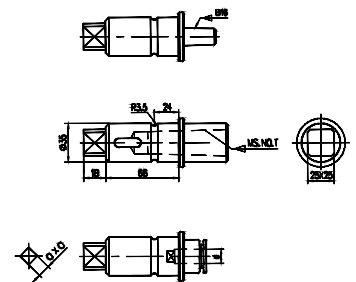
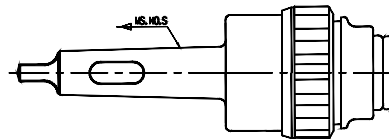
Content M 3 - M 12:
M 3 / M 3,5 / M 4 / M 5 - 6 / M 8 / M 10 / M 12

Content M 12 - M 24:
M 12 / M 14 / M 16 / M 18 / M 20 / M 22 / M 24

- For use of screw tap for through hole or blind holes
- Quick change inserts serially with adjustable safety overload clutch
- Machined thread cutting with hand feed at core drilling machines, table and column drilling machines,....
- Quick and easy change of the screw tape without tools
- Useable on machines with left and right turning
- Maintenance free execution

Art.no.	Morse taper	D	D1	d	L1	L	Cutting range	Torque	Weight approx. excl. VAT
24-1089	MT 2	46 mm	17,780 mm	19 mm	75 mm	171,5 mm	M 3 - M 12	25 Nm	1,08 kg
24-1090	MT 3	46 mm	23,825 mm	19 mm	94 mm	191 mm	M 3 - M 12	25 Nm	1,28 kg
24-1092	MT 3	66 mm	23,825 mm	30 mm	94 mm	227 mm	M 12 - M 24	150 Nm	3,20 kg

Quick change drilling and tapping chuck set M 6 - M 30



- Quick and easy change of the screw tape without tools
- For use of screw tap for through hole or blind holes
- Useable on machines with left and right turning
- Tapping chuck serially with safety overload clutch
- Machined thread cutting with hand feed at core drilling machines, table and column drilling machines,....
- Maintenance free execution

Cutting range	M 6 - M 8	M 10	M 12	M 16	M 18 - M 20	M 24	M 27 - M 30
d x a	6,3 x 5 mm	8 x 6,3 mm	9 x 7,1 mm	12,5 x 10 mm	14 x 11,2 mm	18 x 14 mm	20 x 16 mm
Art. no.	Morse taper	Drilling range	Cutting range	Reducer	Thread cutting inserts		excl. VAT
24-1098	MT 2	3 - 31,5 mm	M 6 - M 30	MT 1 / MT 2 / MT 3	M 6 - 8 / 10 / 12 / 16 / 18 - 20 / 24 / 27 - 30		
24-1099	MT 3	3 - 31,5 mm	M 6 - M 30	MT 1 / MT 2 / MT 3	M 6 - 8 / 10 / 12 / 16 / 18 - 20 / 24 / 27 - 30		

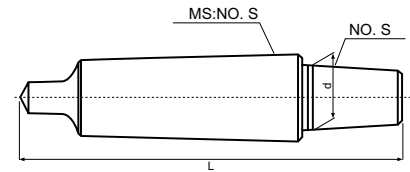


Accessories core drilling machines

Morse taper drill chuck arbor



- Completely hardened and ground
- For taper according to DIN 238
- For mounting of drill chucks on machines with morse taper

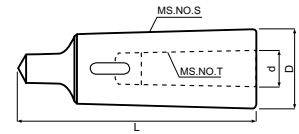


Art.no.	Description	Morse taper	Short taper	Length	d	excl. VAT
24-1002	Drill chuck arbor MT 2 - B 16	MT 2	B 16	112 mm	15,773 mm	
24-1005	Drill chuck arbor MT 3 - B 16	MT 3	B 16	131 mm	15,773 mm	

Morse taper drill sleeve



- Precision execution, completely hardened
- Internal and external taper ground according DIN 2185

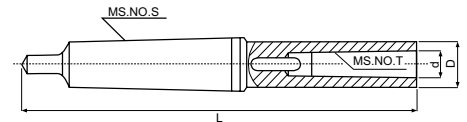


Art.no.	Description	Morse taper	Length	D	d	excl. VAT
24-1022	Morse taper drill sleeve MT 3/2	MT 3	MT 2	112 mm	24,7 mm	17,780 mm

Morse taper extension socket



- Precision execution, completely hardened
- Internal and external taper ground according DIN 2187



Art.no.	Description	Morse taper	Length	D	d	excl. VAT
24-1041	Morse taper extension socket MT 2 / 2	MT 2	MT 2	175 mm	30 mm	17,780 mm
24-1042	Morse taper extension socket MT 2 / 3	MT 2	MT 3	196 mm	36 mm	23,825 mm
24-1043	Morse taper extension socket MT 3 / 2	MT 3	MT 2	194 mm	30 mm	17,780 mm
24-1044	Morse taper extension socket MT 3 / 3	MT 3	MT 3	215 mm	36 mm	23,825 mm

Key type drill chuck with mounting thread



- Execution for machines with right turning
- Application at stationary and hand-operated drilling machines
- With mount 1/2" - 20 UNF
- Steady clamping force at drilling

Art.no.	Description	excl. VAT
24-1075	Key type drill chuck 1-13 mm / 1/2" - 20 UNF	
24-1075B	Key type drill chuck 3-16 mm / 1/2" - 20 UNF	



Accessories core drilling machines

Keyless drill chuck with mounting thread



- With internal thread 1/2" - 20 UNF
- For keyless clamping of the tools
- High concentricity and maximum clamping force
- All wear parts case-hardened and grounded

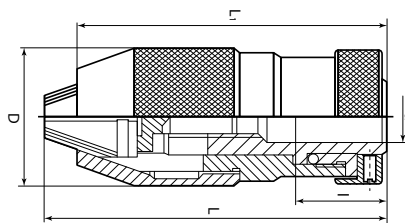


Art.no.	Description	excl. VAT
24-1076	Keyless drill chuck 1-13 mm / 1/2" - 20 UNF	
24-1076B	Keyless drill chuck 1-16 mm / 1/2" - 20 UNF	

Keyless drill chuck with internal taper



- With internal taper B 16
- For keyless clamping of the tools
- High concentricity and maximum clamping force
- All wear parts case-hardened and grounded

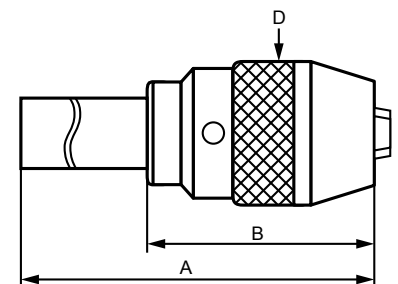


Art.no.	Clamping range	Short taper	d	l	D	L	L1	Weight approx. excl. VAT
24-1082	1 - 16 mm	B 16	15,773 mm	24,000 mm	54 mm	112,2 mm	102 mm	1,268 kg

Keyless drill chuck with direct mount



- Execution with integrated arbor MT 2 or MT 3
- Easy clamping and loosening by hand even after heavy use
- All wear parts case-hardened and grounded
- For keyless clamping of the tools



Art. no.	Clamping range	Morse taper	A	B	D	Weight approx. excl. VAT
24-1070	1 - 13 mm	MT 2	160 mm	80 mm	50,5 mm	1,00 kg
24-1071	1 - 16 mm	MT 2	165 mm	85 mm	57 mm	1,32 kg
24-1072	1 - 16 mm	MT 3	184 mm	85 mm	57 mm	1,48 kg

Accessories core drilling machines

TCT-core drill-set



The carbide core drills with high-quality hard metal coating and optimized cutting edge geometry guarantee a long service life and excellent cutting performance at difficult-to-machine materials such as chrome-nickel steel, but also non-ferrous materials, aluminum, structural steel, The sets include the most commonly used sizes with a drilling depth of 35 mm.

- With Weldon shaft 19 mm
- Delivery in stable plastic box
- Tungsten carbide tipped
- High wear protection
- Very good chip removal
- Drill depth 30 mm

Content:
each 1 pc. 14 / 16 / 18 / 20 / 22 mm
2 pcs. knock-out pin

Art.no.	Description	excl. VAT
41-1106	TCT-core drill-set, 14 - 22 mm, drilling depth 35 mm	

HSS-core drill-set, TiN-coated / nACO-coated

The TiN- and nACO-coated core drill-sets are out of high speed steel and designed for professional use. The sets contain the most frequently used sizes and are available with a drill depth of 25 mm and 50 mm (TiN-coated) or 30 mm and 50 mm (nACO-coated). Core drills are often better suited than twist drills because of the small ring which is being drilled as opposed to the entire drill area, resulting in less need for force.



HSS-core drill TiN-coated

- With Weldon shaft 19 mm
- Very good chip removal
- High speed steel
- High wear protection
- Drill depth 25 mm (CDS) or 50 mm (CDL)

Content:
• 2 pcs. 14 mm
• 2 pcs. 18 mm
• 1 pc. 22 mm

Art.no.	Description	excl. VAT
41-1105	HSS-core drills CDS, 14/18/22 mm, drilling depth 25 mm, 5 pcs.	
41-11050	HSS-core drills CDL, 14/18/22 mm, drilling depth 50 mm, 5 pcs.	



HSSC05-core drill nACO-coated

- With Weldon shaft 19 mm
- Very good chip removal
- High speed steel
- Hard coating
- High wear protection
- High hardness and adhesive strength
- Drill depth 30 mm (CDS) or 50 mm (CDL)

Content:
• 2 pcs. 14 mm
• 2 pcs. 18 mm
• 1 pc. 22 mm

Art.no.	Description	excl. VAT
41-11051	HSSC05-core drills CDS, 14/18/22 mm, drilling depth 30 mm, 5 pcs.	
41-11052	HSSC05-core drills CDL, 14/18/22 mm, drilling depth 50 mm, 5 pcs.	

Accessories core drilling machines

HSS-standard core drill-set

The HSS-standard core drill-set is out of high speed steel and designed for professional use. The sets contain the most frequently used sizes and are available with a drill depth of 25 mm or 50 mm.



HSS-standard core drill-set

- With Weldon shaft 19 mm
- Delivery in stable plastic box
- High speed steel
- Very good chip removal
- Drill depth 25 mm (CDS) or 50 mm (CDL)

Content:
each 1 pc. 14 / 16 / 18 / 20 / 22 / 24 mm
1 pc. knock-out pin

Art.no.	Description	excl. VAT
41-1104	HSS-standard core drill-set CDS, 14 - 24 mm, drilling depth 25 mm	
41-11040	HSS-standard core drill-set CDL, 14 - 24 mm, drilling depth 50 mm	

HSS-core drill-set, TiN-coated / nACO-coated

The TiN- and nACO-coated core drill-sets are out of high speed steel and designed for professional use. The sets contain the most frequently used sizes and are available with a drill depth of 25 mm and 50 mm (TiN-coated) or 30 mm and 50 mm (nACO-coated). Core drills are often better suited than twist drills because of the small ring which is being drilled as opposed to the entire drill area, resulting in less need for force.



HSS-core drill TiN-coated

- With Weldon shaft 19 mm
- Delivery in stable plastic box
- Very good chip removal
- High speed steel
- High wear protection
- Drill depth 25 mm (CDS) or 50 mm (CDL)

Content:
each 1 pc. 14 / 16 / 18 / 20 / 22 / 24 mm
1 pc. knock-out pin

Art.no.	Description	excl. VAT
41-11041	HSS-core drill-set CDS, 14 - 24 mm, drilling depth 25 mm	
41-11042	HSS-core drill-set CDL, 14 - 24 mm, drilling depth 50 mm	



HSSCO5-core drill nACO-coated

- With Weldon shaft 19 mm
- Delivery in stable plastic box
- Very good chip removal
- High speed steel
- Hard coating
- High wear protection
- High hardness and adhesive strength
- Drill depth 30 mm (CDS) or 50 mm (CDL)

Content:
each 1 pc. 14 / 16 / 18 / 20 / 22 / 24 mm
1 pc. knock-out pin

Art.no.	Description	excl. VAT
41-11043	HSSCO5-core drill-set CDS, 14 - 24 mm, drilling depth 30 mm	
41-11044	HSSCO5-core drill-set CDL, 14 - 24 mm, drilling depth 50 mm	

Accessories core drilling machines

Countersink and deburring tools

Using countersink and deburring tools, bores can be deburred or recesses made for countersunk screws or rivets. The countersink and deburring tools from BERNARDO are available with cylindrical shaft or Weldon 19 mm. The precise execution guarantee vibration-free work and perfect results.



- 6-pcs. set out of HSS in metal box
- With cylindrical shaft
- Countersink angle 90°, 3 cutting edges
- according to DIN 335-C

Content:
each 1 pc. 6,3 / 8,3 / 10, 4 / 12,4 / 16,5 / 20,5 mm

Art.no.	Description	excl. VAT
41-1075	6 pcs. HSS countersink set 90°	

- 4-pcs. set out of HSS-TiN in metal box
- With cylindrical shaft
- Optimal chip removal through bore in shaft direction

Content:
each 1 pc. 2 - 5 mm / 5 - 10 mm / 10 - 15 mm / 15 - 20 mm

Art.no.	Description	excl. VAT
41-1080	4 pcs. countersink and deburring tool	



- Countersink angle 90°, 3 cutting edges
- With Weldon shaft 19 mm
- Countersink range from 15 - 50 mm

Art.no.	Description	excl. VAT
41-1076	Countersink and deburring tool 90°, 15 - 50 mm, Weldon 19	

Core drill set



Core drill set are suitable for core drilling machines when drilling small holes with a diameter from 6 - 13 mm. Significant advantages compared to twist drills are the Weldon direct chuck which allows for better stability as well as the two cutting edges which eliminate the need for a centre punch

Recommended cutting speed:
Vc = approx. 30 m/min.

Core drill: 6 / 8 / 10 / 11 / 12 / 13 mm
Drill depth: 30 mm
Shaft: Weldon 19 mm

Art.no.	Description	excl. VAT
41-1103	Core drill set, 6 - 13 mm, drill depth 30 mm, 6-pcs.	

Miscellaneous accessories



This device attracts chips by a strong magnetic force which can then be manually released by pulling the button. Convenient removal and collection of magnetic chips. Makes keeping your work place tidy with easy.

Art.no.	Description	excl. VAT
51-1050	Magnetic chip collector	

Accessories core drilling machines

Universal coolant fluid MN 1103



Coolant fluid - to be diluted with water - features outstanding performance and is highly efficient. Content makes up to 200 l coolant emulsion.

The special additions increase the durability and improve the chip flow, this guarantee a better cutting result on the machined material.

This concentrat is designed for all machining processes of steel and non-ferrous metal, for example drilling, milling, sawing, turning etc.

Application concentration (Oil:Water)
Drilling, milling, turning 1:20 to 1:40

Art.no.	Description	excl. VAT
54-1206	Universal coolant fluid MN 1103, 5 l canister	

High-performance cutting oil BDS 5000



High-performance cutting oil for medium to heavy machining of metals and plastics.

The excellent coolant and lubrication effect increase the durability of the tools and improve the chip removal, this guarantee a veter cutting result on the machined material.

Art.no.	Description	excl. VAT
54-1208	High-performance cutting oil BDS 5000 / 1 ltr.	
54-1209	High-performance cutting oil BDS 5000 / 5 ltr.	

High-performance lubrication spray BDS 5200



Application mainly at over head or horizontal work, but also useable for machining at drilling , milling, sawing, thread cutting etc.

Advantage of this lubrication spray is the exact dosing and therefore an optimal lubrication directly at the cutting tool.

Art.no.	Description	excl. VAT
54-1210	High-performance lubrication spray BDS 5200 / 1 x 400 ml can	
54-1211	High-performance lubrication spray BDS 5200 / 6 x 400 ml can	
54-1212	High-performance lubrication spray BDS 5200 / 12 x 400 ml can	

High-performance cutting paste BDS 5500



Optimal useable for metals, high-alloyed steels, nickel-chromium alloy, rust and heat -resistant steels.

Application mainly at over head or horizontal work (for example core drilling), but also useable for sawing, reaming, broaching etc.

Art.no.	Description	excl. VAT
54-1207	High-performance cutting paste BDS 5500 / 1000 g	

Your dealer

BERNARDO[®]
www.bernardo.at

PWA Handelsges.m.b.H.
4020 Linz | Nebingerstraße 7a | Austria
phone: +43.732.66 40 15 | fax: +43.732.66 40 15-9
e-mail: bernardo@pwa.at | www.bernardo.at

Imprint:

All rights reserved – reproduction of images or texts or parts of these is strictly prohibited unless prior arrangements are made. Subject to technical and optical amendments. Product specifications subject to change without notice. Not responsible for printing errors or mistakes. Machines are partly displayed with optional extras. Prices subject to change. Prices in Euros, ex works (Linz, Austria), excl. any taxes. Edition 02/2022.